

Intelligent turnstiles gate description



Product

Introduction

Three roller gate, is a kind of channel control equipment consisting of three rotating rods. Its working principle is mainly based on mechanical transmission and electric control. When the system receives a legal opening signal, the motor drives the transmission mechanism to make the three rollers rotate to the horizontal position, allowing pedestrians to pass through; and when there is no signal or an illegal signal is received, the three rollers maintain a vertical state, preventing pedestrians from passing through. In addition, the three-roller gate is also equipped with an anti-tailgating function to ensure that only one person can pass through at a time, effectively preventing illegal intrusion.



Station



Park



School



Gyms



Port

Technical Parameter

◇ Structure: frame structure/stainless steel shell
◇ Production technology: Computer numerical control laser cutting machine production
◇ Exterior dimensions: L420×W330×H980 (mm)/L1200×W280×H980 (mm) (varies according to style)
◇ Weight: 40Kg
◇ Length of gate lever: 510 (mm) outside the chassis
◇ Gate lever bearing force: 80Kg
◇ Gate lever working driving force: 3Kg
◇ Gate lever drive: digital
◇ Gate lever steering: unidirectional and bidirectional (optional); a variety of working modes are available, including bidirectional card-reading and flow limitation, card-reading in one direction and prohibited traffic in the other, and card-reading in one direction and free passage in the other.
◇ Automatic reset function: after opening the gate, the system will be automatically locked if it is not passed within the specified time, and the passing time is adjustable;
◇ Light prompt: passing direction indication
◇ Adopting the working principle of optical aperture, there is no time delay requirement for the input control signal.
◇ Working environment: indoor and outdoor
◇ Temperature: -10℃~50℃ Relative humidity: ≤90%, no condensation
◇ Sensor card reading port size: with standard mounting bracket, or tailor-made
◇ Gate opening time: 0.2 seconds
◇ Passing speed: 30 persons/minute
◇ Communication interface: standard RS485 interface, distance ≤1200 metres
◇ Input interface: dry contact signal or +12V level signal or DC12V pulse signal with pulse width ≥100ms, driving current ≥10mA;
◇ Structure: frame structure/stainless steel shell
◇ Passage speed: 40-50 people / minute
◇ Access control: face recognition/finger print recognition/QR code/swipe card, etc.



PASSING SPEED



PASSAGE FOR DISABLE



BI-DIRECTION



110V-220V
POWER SUPPLY



ANTI-TAILGATING

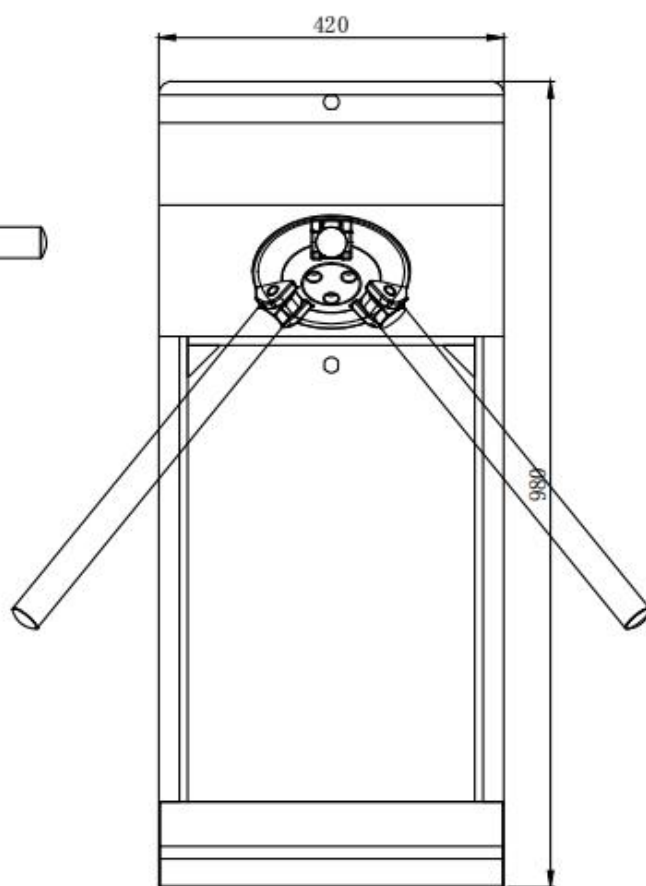
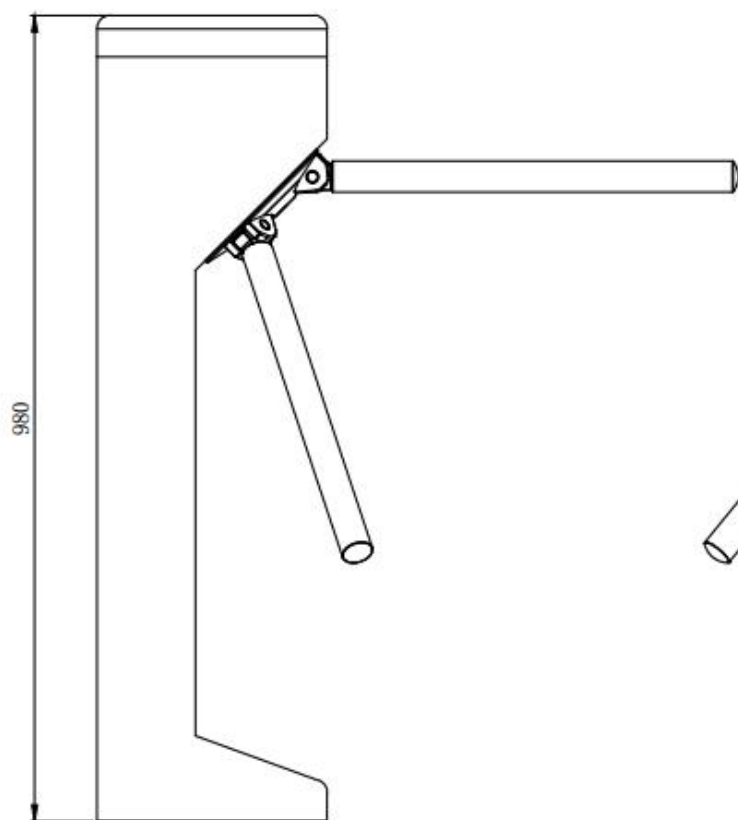
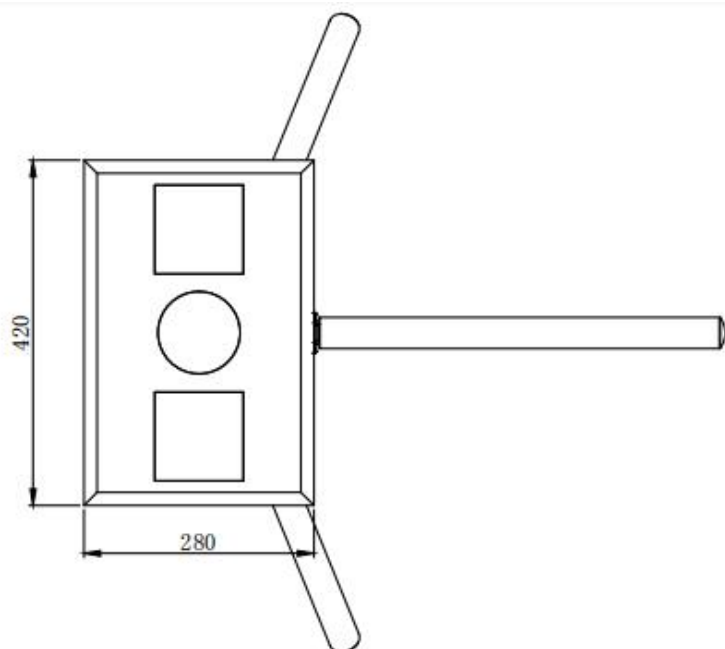


PROTECTIVE LEVEL



Product

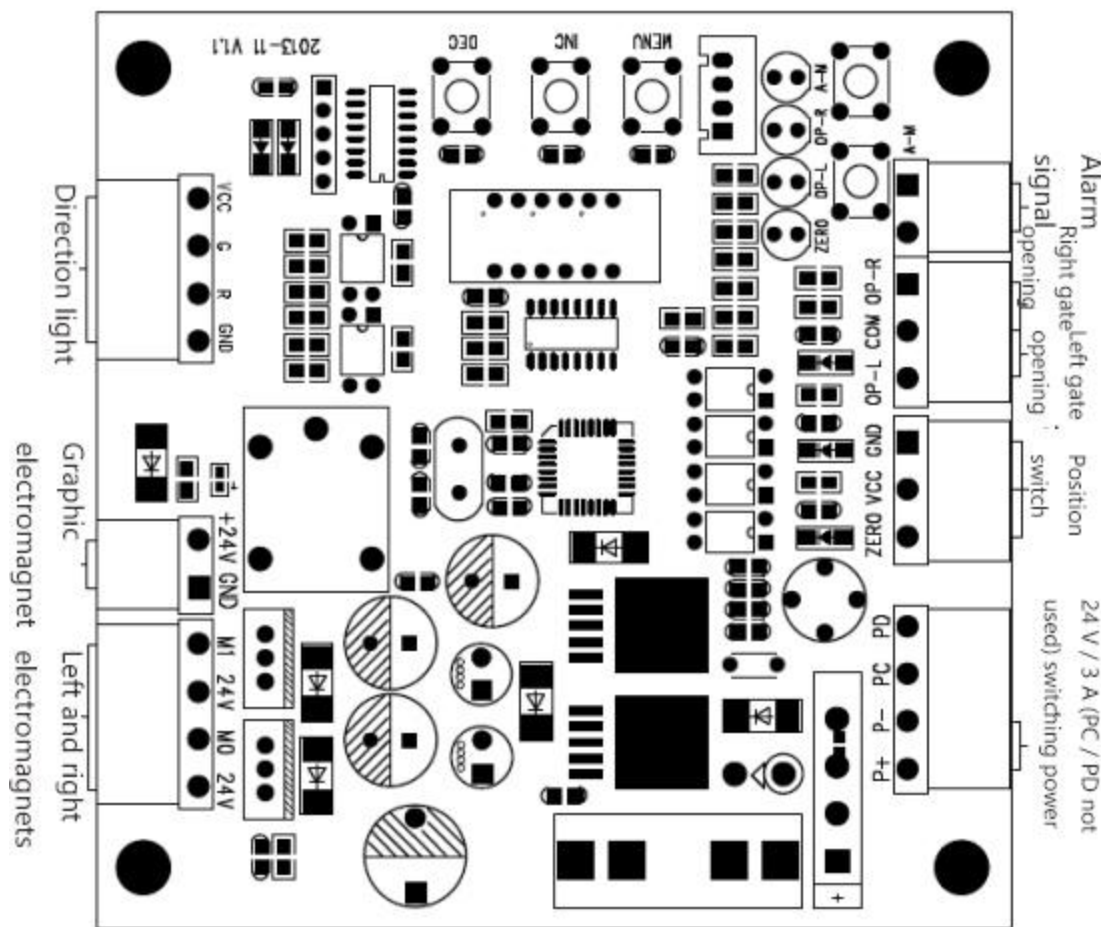
Dimension



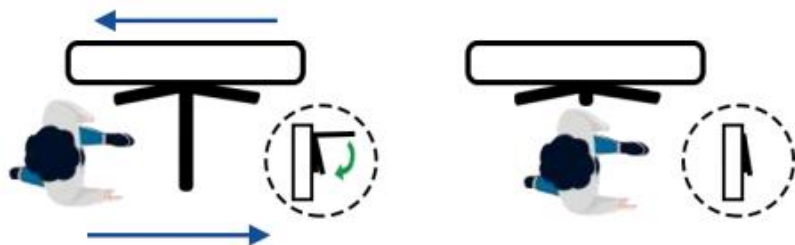


Wiring

Diagram



Emergency mode



In case of a power outage, turn arms will drop off when power outage.
Manually reset when power is restored.
* If the mechanism is fully automatic, it will self-test after powering up
and the turn arms will rotate and lift automatically.

Product

Feature

- The whole system operation adopts stepless sub-positioning device, the operation process is controlled by the sensor, no mechanical impulse
- CNC machining process, fine surface treatment, strong corrosion resistance
- with automatic reset function, pedestrians read a valid card, if not passed within the specified time, the system will automatically cancel the user's authority to pass this time.
- is convenient and easy to use, easy to carry items such as parcels and luggage through the
- Anti-tailgating function: prevention level 2
- Passage mode: one-way, two-way (optional), adjustable operating speed; with a variety of operating modes to choose from
- light prompts: pass direction indication
- with lightning protection and leakage protection function
- protection function: with anti-pinch, anti-blocking, anti-stall, anti-electrical over-voltage and over-current functions
- prevent illegal operation and alarm function
- standard external electrical interface, with safety isolation, can be connected with a variety of control equipment, easy system integration
- Remote control and setting function

We have experienced designers who can complete deep customization according to any of your needs.



We can provide full security access control solutions.

Support custom-made

Factory independent research and development process new upgrade



Face Recognition



Fingerprint Recognition



Swipe Card
Authentication



card swallowing
system



Ticketing System



Fee deduction system



site system



Campus Management



Gym System

Functional

features



Face Recognition

Accurate and fast identification



Fingerprint Recognition

Orderly and efficient passage



Swipe Card Authentication

Easy to manage restrictions



Card swallowing system

Saving resources



Ticketing System

OTA Online Ticketing



Fee deduction system

Clear transaction



Site system

Real Name Management System



Campus Management

Capture, information push



Gym System

No need for personnel management