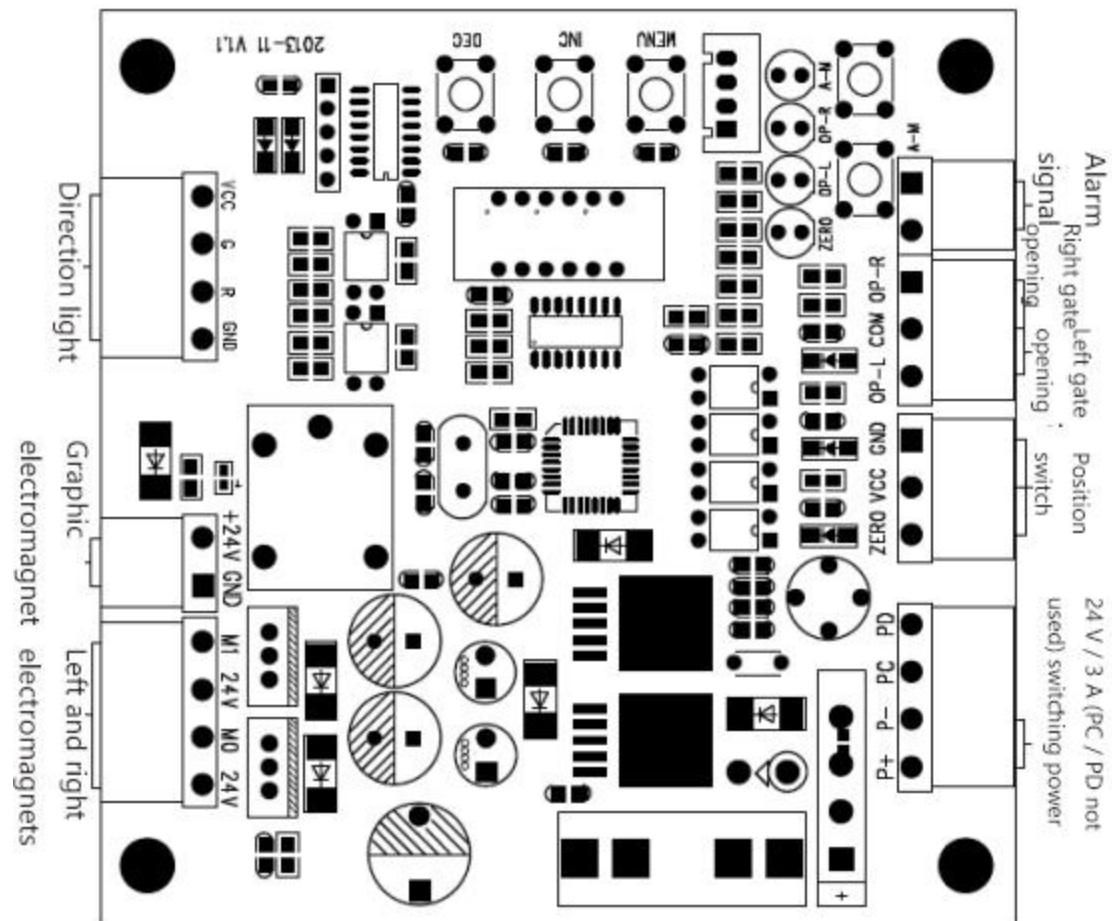
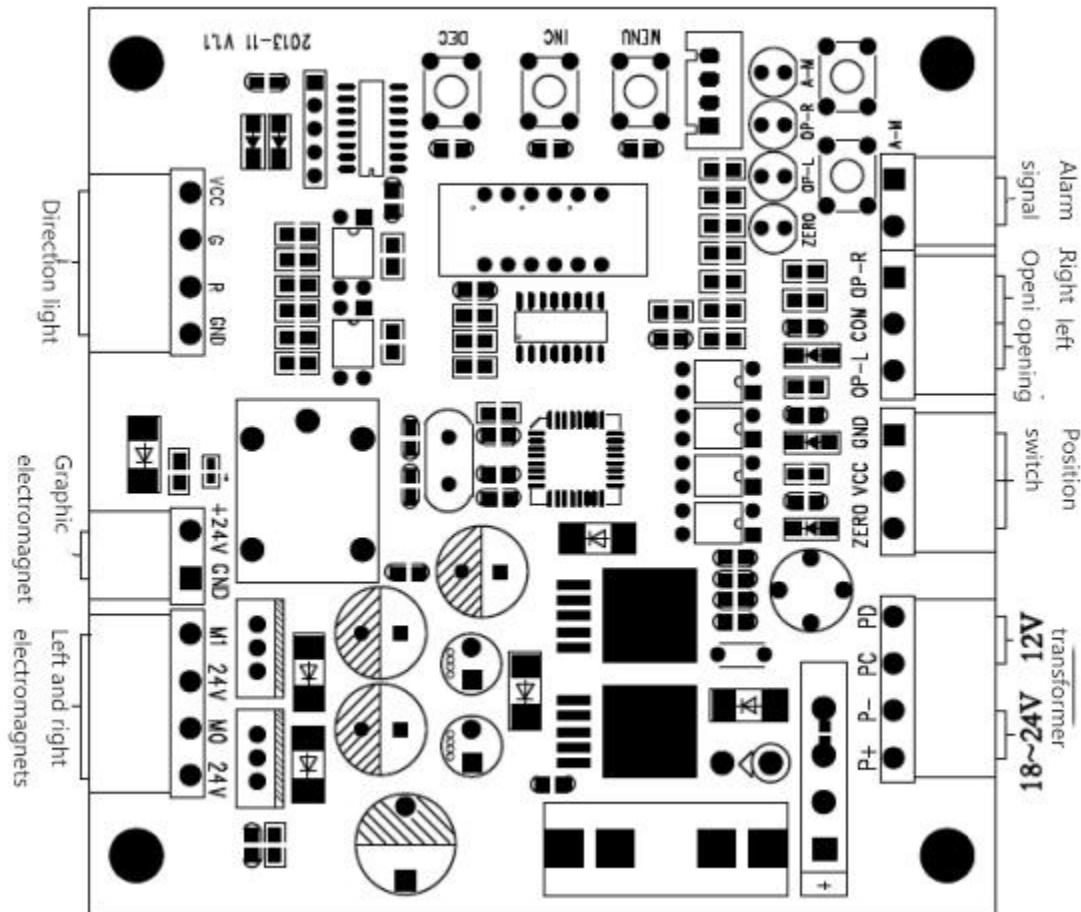


Description of parameters of LED Tripod Turnstile gate

1: Switching Power Supply Wiring



2: transformer wiring



Menu Settings

The control board key : " MENU "menu key , " INC" up / add key , " DEC "down / subtract key three operation keys.

Function description of each function key:

MENU "key :1: in the standby interface long press this key to enter the system menu :2: in the system menu interface, select the corresponding menu and press the key to enter the menu parameter setting interface :3: after the menu is set, press this key to save the parameters and return to the system menu interface.

Key INC "+1 function when selecting system menus and setting parameters up

"DEC" key: go down to select the system menu and set the parameters when -1 function

NOTE : in the system menu and menu setting interface, in 5 seconds no key operation, the system automatically exit menu to standby interface.

For example, to change the gate passage length operation:

Step 1: press "MENU ""to enter the system menu, use" INC "、" DEC "key up and down to select" F 0" respectively 1" menu (menu description below).

Step 2: press the MENU "key to enter the channel length setting interface.

Step 3: use the INC "、" DEC" key to add and subtract the parameter values up and down, respectively.

Step 4: after setting up, press MENU "key to save.

Step 5: exit menu: turn the menu to the F 10" menu, press the MENU "key to manually exit the menu or 5 seconds no operation button automatically exit the menu.

Three stick plate parameter setting instructions:

The <Run> is displayed on the LED screen after the control board is powered on.

A. System menu description:

1. F 0 1":

Set the passage time. In this setting time after the person passes through the gate, the time automatically clears, if no one passes, the time to the gate automatically closes. (System default 5 seconds)

2. F 0 2"

Often open function settings. 1 : always open the left electromagnet. 2 : always open the right electromagnet. 3 : often open the left and right sides of the electromagnet. (Default value 3) Open electromagnets on both sides normally)

3. F 0 3"

Gate working mode. 0: free passage (commonly used on switch)1: power down rod (default 1 power down rod)

4. **F 0 4"**

Memory function. Whether to open or close the entrance and exit has the memory function, generally used to swipe the card to open the gate, in one person swipe the card has not passed, whether to remember the other person's credit card situation. "No" is the first person to pass the card, the second person to swipe the card can be effective ;" allowed "for the number of people swipe the card is allowed to continue how many people pass. (Default 0, no memory)

5. **F 0 5"**

Repeated switch test, mainly used to test gate control board stability and aging test.

Note : in test mode, press MENU key to exit test

6. **F 0 6"**

Zero bit signal setting. 0: detected zero-bit signal immediately shut down the gate (three-roll gate standard mode, motherboard default set to 0)1: detect zero-bit signal, then wait for zero-bit signal to disappear before closing the gate (commonly used on full height)(default 0)

7. **F 0 7"**

The gate is often set in seconds. This parameter is used to detect the continuous opening signal. When the duration of the continuous opening signal exceeds the set parameter, the system enters the open state (which side of the electromagnet is determined by the F02 parameter, and the F02 parameter is the electromagnet on both sides by default). If the opening signal of the gate is a continuous signal, the gate opportunity is always on. After the continuous signal is disconnected, the gate recovers the standard mode. (default parameter 0 seconds, often on and off)

8. **F 0 8"**

Opening delay. This parameter turns on the memory function to be effective, after turning on the memory function, the opening delay of more than one person can prevent the previous person from opening the gate again before passing through the channel. (default value 0, no delay)

9. F 0 9"

Restore factory settings. All parameters of the motherboard are restored to factory settings.

"F 1 0"

Exit menu. or 5 S without keys